



701

Timpanogos Parkway

For Lease



CANYON TECH PARK CNTR

the **Muller**
company

www.canyonparkutah.com

Contact:

James Bullington
Executive Vice President
+1 801 836 2400
james.bullington@colliers.com

Josh Martin
Executive Vice President
+1 801 830 2004
josh.martin@colliers.com

Brandon Huntsman
Executive Vice President
+1 801 830 9232
brandon.huntsman@colliers.com

Brandon Fugal
Chairman
+1 801 947 8300
brandon.fugal@colliers.com

Property Details

- Campus size: 591,894 SF
- 10 Buildings throughout park
- Renovated suites and lobbies
- Various size options and layouts
- Generous parking available
- Podcast room
- Amenity center for all tenants
- Full access gym for all tenants
- Outdoor yard activity center
- 5 Backup generators
- Abundant fiber options
- On-site UTA pick-up and drop-off
- FrontRunner route access
- Auditorium and conference center
- Murdock Canal Trail through park
- Minutes to Provo Canyon
- 134 restaurants within close proximity
- 1,488 hotel rooms within close proximity



Video



Website

Where companies come to grow

The Hub

- Indoor amenity area
- Massage therapy
- Arcade games
- Shuffleboard
- Ping Pong
- Self-service vending courtesy of Avenue C
- Podcast room



The Gym

- Matrix professional branded machines
- Yoga Studio
- Spin Room
- Virtual classes
- Full-Service Locker rooms
- Free weights
- The mirror work-out system
- Tonal work-out system
- Treadmills
- Stair-Stepper
- Bikes



The Yard

- Outdoor amenity area
- Pickleball/basketball court
- Grass volleyball court
- Outdoor ping pong
- Cornhole
- Hammock garden
- Variety of lounge seating
- Auto detailing
- Mobile oil change
- BBQ area
- EV charging stations
- Murdock Canal trail



Dining Options



- A variety of food trucks are scheduled weekly on Monday through Thursday from 11:00 AM to 2:00 PM, located adjacent to the YARD

Property Site Plan / Photos



1501-1599 E Technology Wy | For Lease

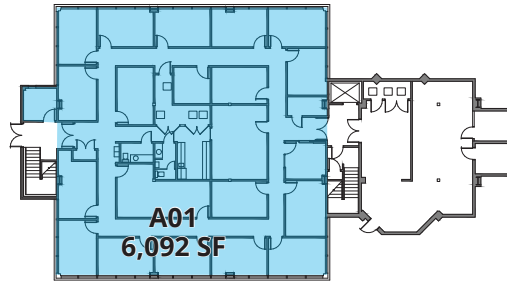
Building A

Total Available:
14,190 SF



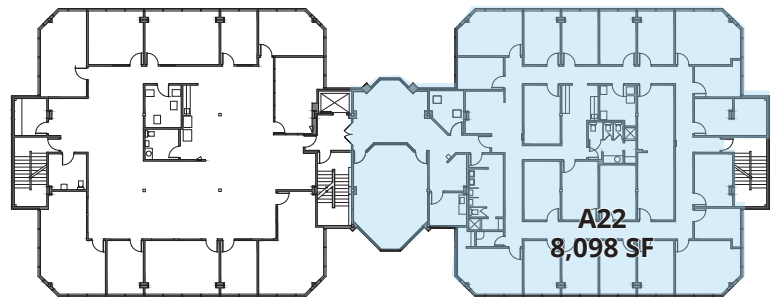
FLOOR 0

Suite A01 | 6,092 SF



FLOOR 2

Suite A22 | 8,098 SF



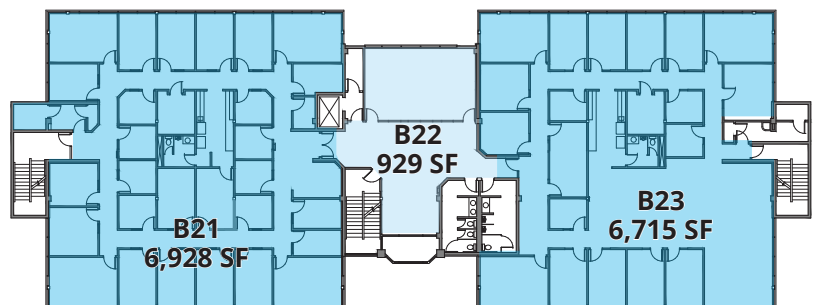
600-699 E Technology Wy | For Lease

Building B

Total Available:
6,715 SF -14,572 SF

FLOOR 2

Suite B21-23 | 14,572 SF

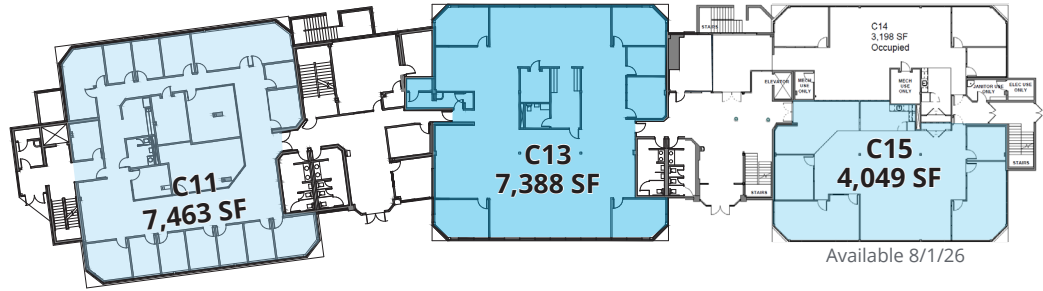


Building C

Total Available:
4,049 SF - 56,498 SF

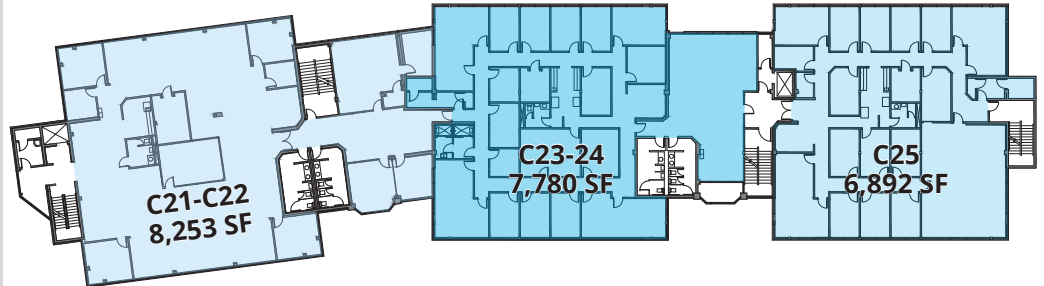
FLOOR 1

- Suite C11 | 7,463 SF
- Suite C13 | 7,388 SF
- Suite C15 | 4,049 SF



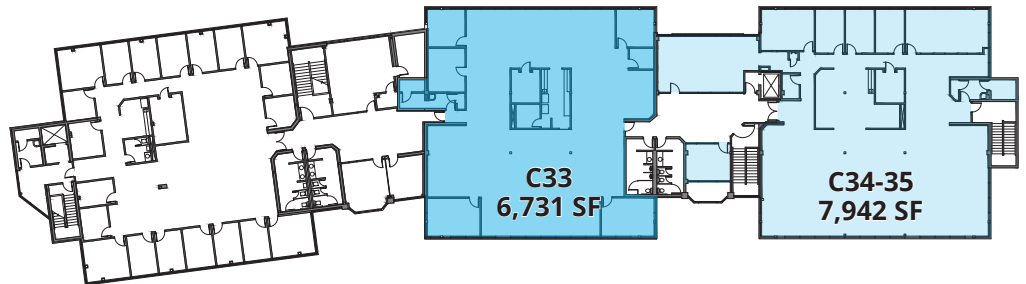
FLOOR 2

- Suite C21 - 22 | 8,253 SF
- Suite C23 - 24 | 7,780 SF
- Suite C25 | 6,892 SF



FLOOR 3

- Suite C33 | 6,731 SF
- Suite C34 - 35 | 7,942 SF

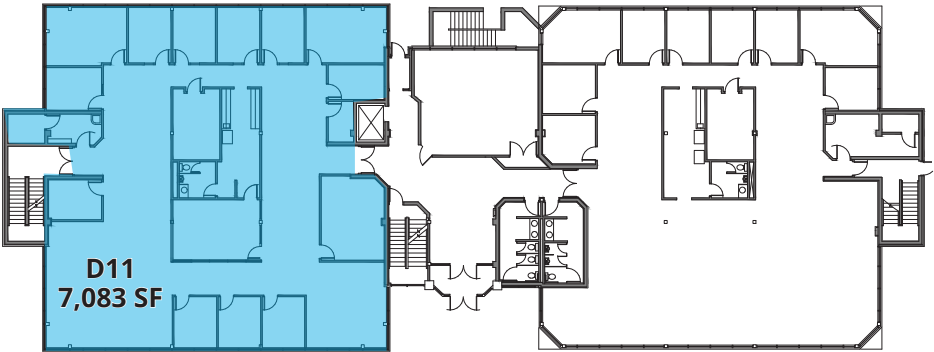


Building D

Total Available:
7,083 SF - 14,913 SF

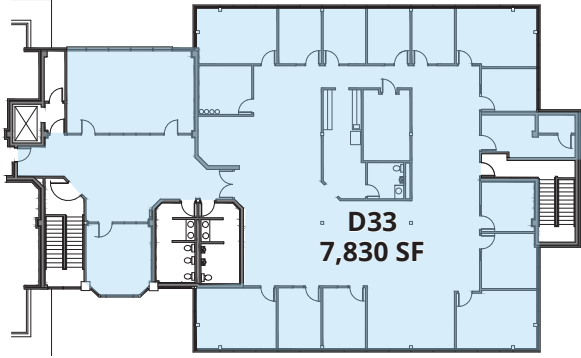
FLOOR 1

Suite D11 | 7,083 SF



FLOOR 3

Suite D33 | 7,830 SF



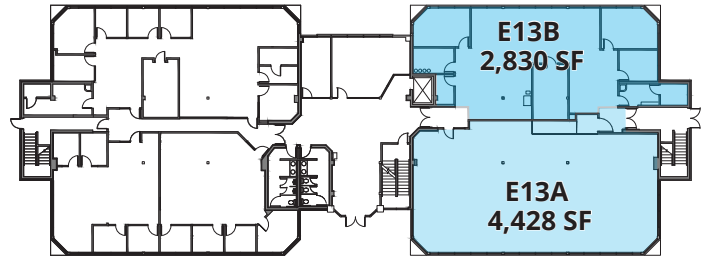
Building E

Total Available:
2,830 SF - 22,650 SF

FLOOR 1

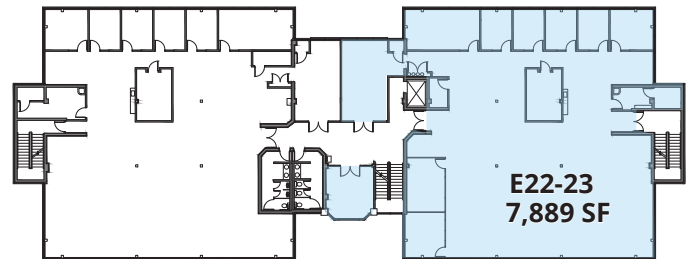
Suite E13A | 4,428 SF

Suite E13B | 2,830 SF



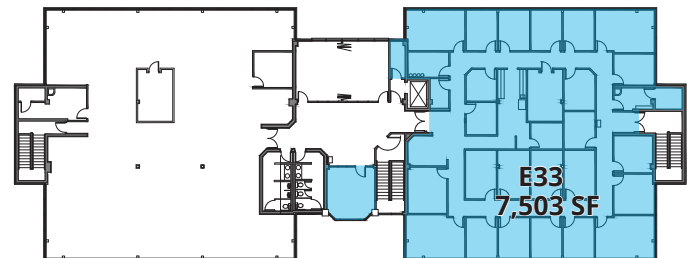
FLOOR 2

Suite E22-23 | 7,889 SF



FLOOR 3

Suite E33 | 7,503 SF

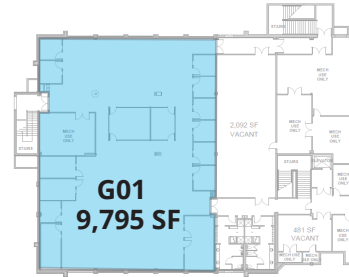


Building G

Total Available:
9,795 SF - 106,232 SF

FLOOR 0

Suite G01 | 9,795 SF

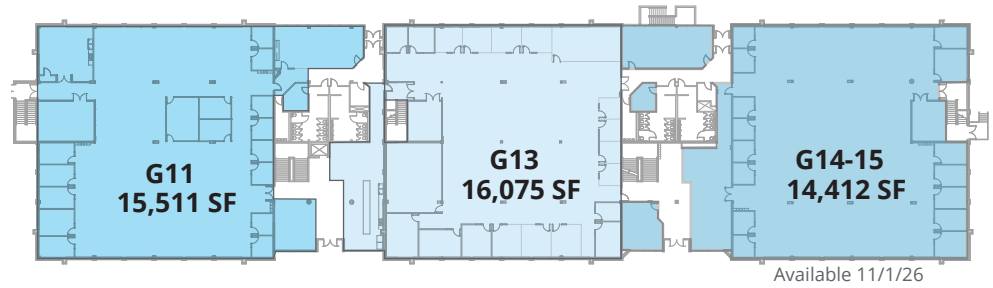


FLOOR 1

Suite G11 | 15,511 SF

Suite G13 | 16,075 SF

Suite G14-15 | 14,412 SF

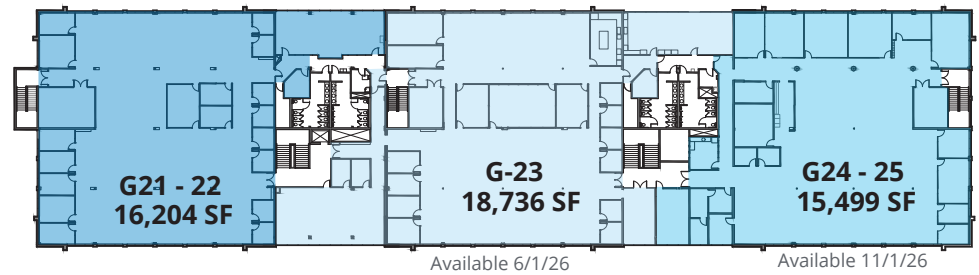


FLOOR 2

Suite G21 - 22 | 16,204 SF

Suite G23 | 18,736 SF

Suite G24 - 25 | 15,499 SF



600-699 E Timpanogos Cir | For Lease

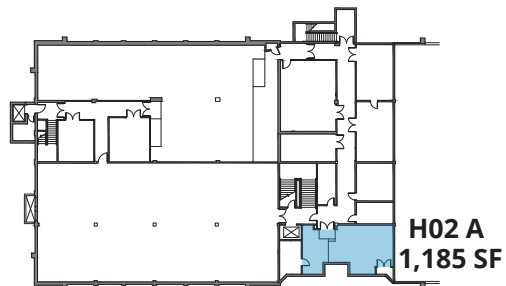
Building H

Total Available:
1,185 SF - 61,773 SF



FLOOR 0

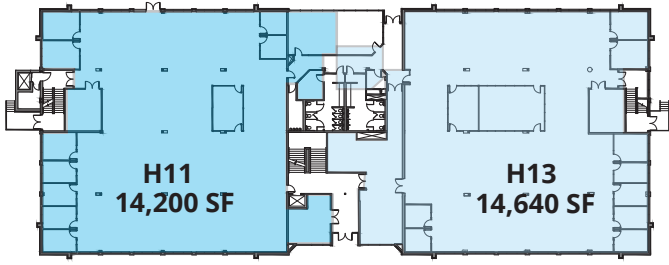
Suite H02 A | 1,185 SF



FLOOR 1

Suite H11 | 14,200 SF

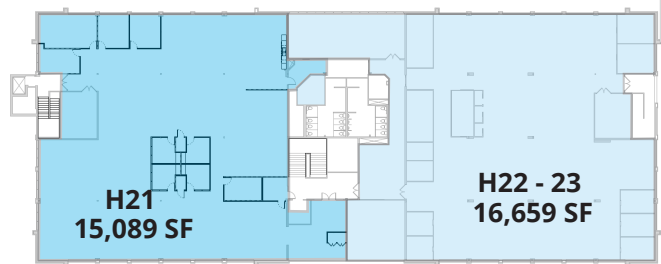
Suite H13 | 14,640 SF



FLOOR 2

Suite H21 | 15,089 SF

Suite H22 - 23 | 16,659 SF



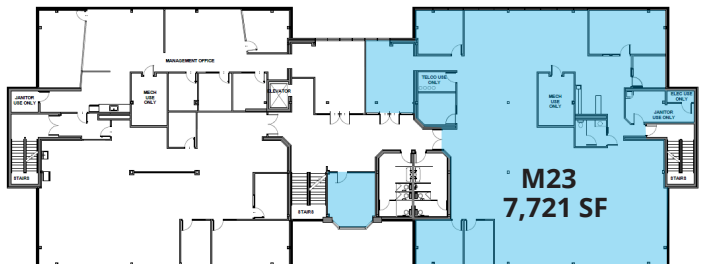
701-799 E Timpanogos Way | For Lease

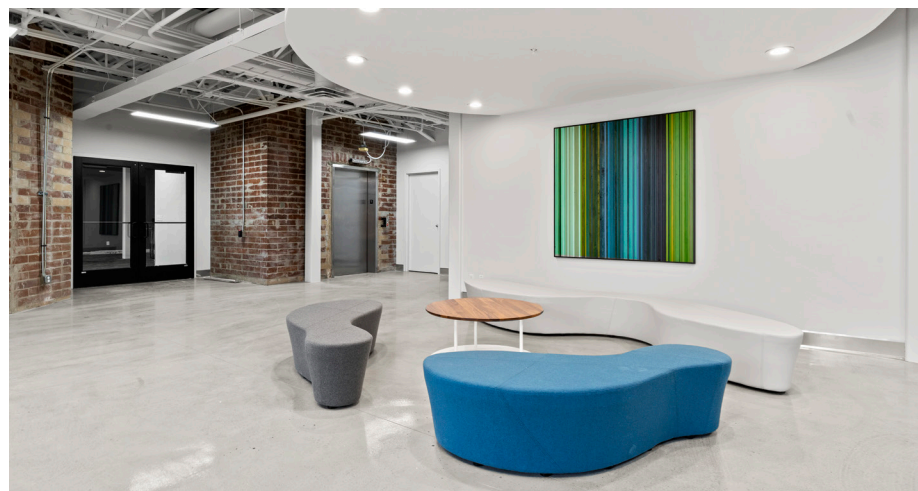
Building M

Total Available:
7,721 SF

FLOOR 2

Suite M23 | 7,721 SF





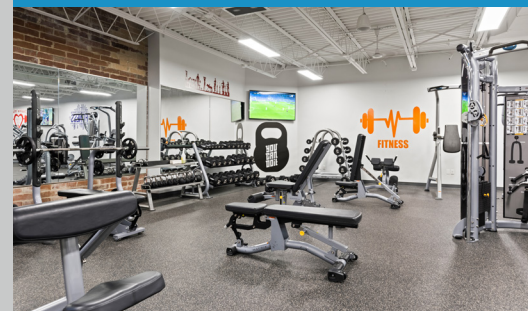
THE HUB



THE YARD



THE GYM



Amenities Within 3 Miles of Site	Amenities Within 5 Miles of Site
51 Restaurants	134 Restaurants
245 Hotel Rooms	1488 Hotel Rooms
17 Gas Stations	33 Gas Stations
8 Car Washes	17 Car Washes
5 Grocery Stores	13 Grocery Stores
34 Retail Shops	114 Retail Shops
1 Golf Course	3 Golf Courses
33 Parks	63 Parks
Distance From:	Miles
I-15	3.4
Sundance	11.3
Murdock canal trail	0.3
Utah Lake	6.7
Riverwoods	3.1
University Mall	3.6
Closest FrontRunner Station (Orem)	6.5
Deer Creek Reservoir	14.3
BYU	6.2
UVU	4.6



CANYON
TECH PARK CNTR

CANYON PARK® is a registered trademark. All rights reserved.



Colliers
2100 Pleasant Grove Blvd., Suite 200
Pleasant Grove, UT 84062
Main: +1 801 947 8300
colliers.com

James Bullington
Executive Vice President
+1 801 836 2400
james.bullington@colliers.com

Brandon Huntsman
Executive Vice President
+1 801 830 9232
brandon.huntsman@colliers.com

Josh Martin
Executive Vice President
+1 801 830 2004
josh.martin@colliers.com

Brandon Fugal
Chairman
+1 801 947 8300
brandon.fugal@colliers.com

This document has been prepared by Colliers International for advertising and general information only. Colliers International makes no guarantees, representations or warranties of any kind, expressed or implied, regarding the information including, but not limited to, warranties of content, accuracy and reliability. Any interested party should undertake their own inquiries as to the accuracy of the information. Colliers International excludes unequivocally all inferred or implied terms, conditions and warranties arising out of this document and excludes all liability for loss and damages arising there from. This publication is the copyrighted property of Colliers International and/or its licensor(s). ©2026. All rights reserved.